



# BAS001 Omnidirectional Source

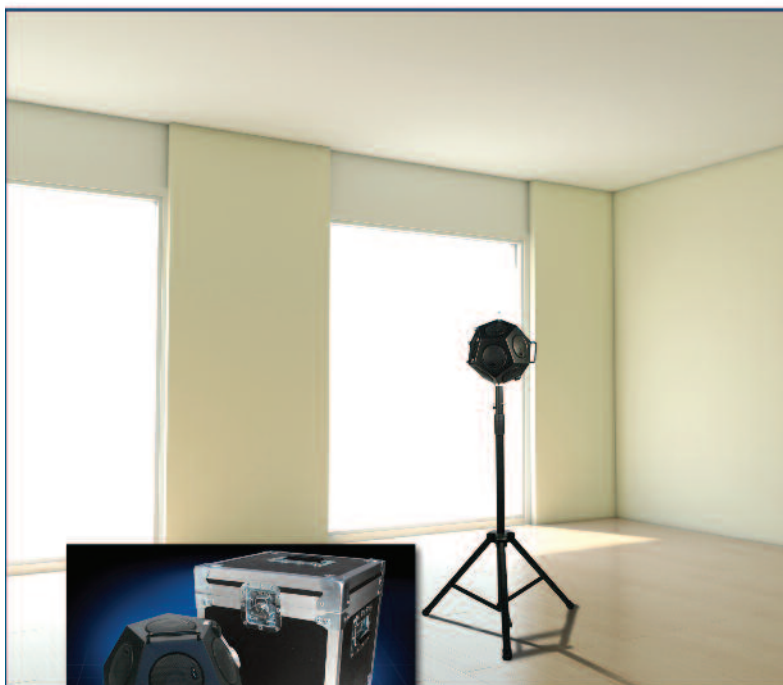
Omnidirectional (Dodecahedral) Sound Source for Reverberation Time, Room Acoustic and Building Acoustic Measurements

## Highlights

- Used for ISO 140-4, ISO 140-3, ISO 3382, DIN55210, ASTM E90, E336, E2235, C426 compliant measurements
- High sound power level output
- Acoustically Isotropic Source
- Available lightweight & compact amplifier (BAS002E/U)

## Applications

- Room Acoustics: In-situ Reverberation Time Measurement
- Building Acoustic Measurements
- Sound Insulation
- Evaluation of the Acoustic Indexes for the Transmission Loss of Horizontal or Vertical Partitions
- Sweep Response Technique



**BAS001 on Tripod**



**Model BAS001**

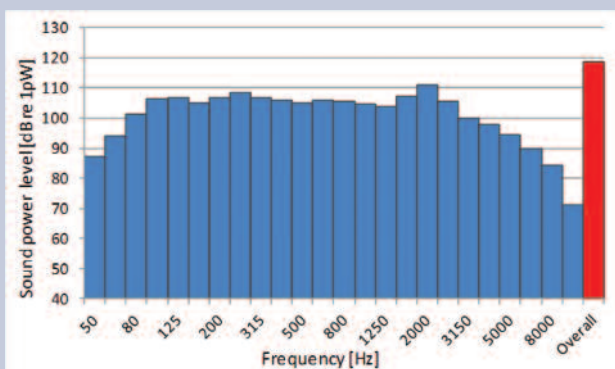
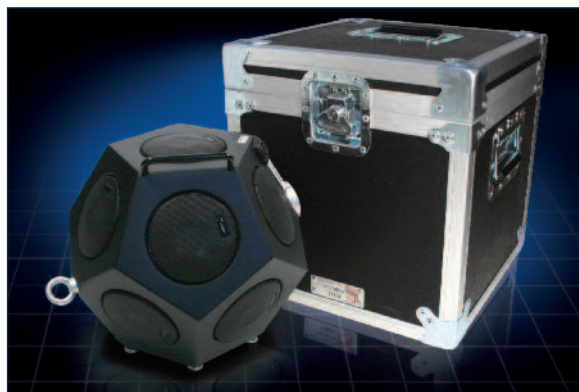
The BAS001 Source is designed to generate omni-directional sound fields for making standard compliant measurements including: reverberation time (ISO 3382, ASTM E2235), building acoustics (insertion loss, acoustic absorption area, etc: ISO 140-4 ISO 140-3, ASTM E336, ASTM E90, DIN 55 210). The BAS001 is typically used to saturate a room with a uniform acoustic field. The available high-efficiency power amplifier has no fan for cooling, allowing measurements in quiet environments, like those in reverberation time applications.



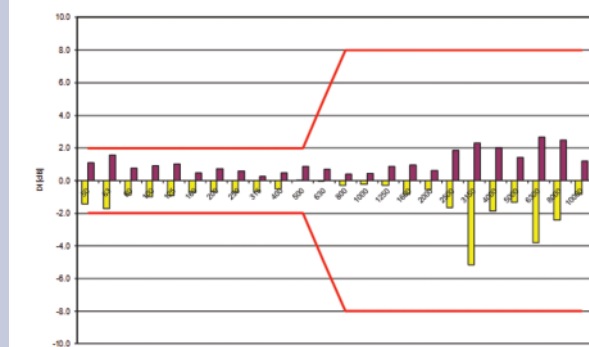
## Dodecahedral loudspeaker

### Acoustic

Sound Power	117 dB re 1 pW (not-equalized) 109 dB re 1 pW (equalized 50-5kHz)
Sound Pressure Level	95 dB(Z) at 10 m
Operating range	50 ~ 12.5 kHz
THD	0.1%
Amplitude linearity	±2 dB from 50 to 5 kHz
Directivity	20° at -3 dB
Carrying case (CCS044)	
Dimensions (wxdxh)	370 x 370 x 390 mm (14½ x 14½ x 15¼ in)
Weight	7.7 kg (17 lbs)
Speak-on Cable	
Length	10 m
Weight	0.7 kg (1.7 lbs)



1/3 octave band sound power levels – The overall value is 119 dB re 1pW



Minimum and maximum shift of the directivity index as a function of frequency according to ISO 140 standard.

## Compliance

### Acoustic

LAB - adjacent room: ISO 140-3, ASTM E90
FIELD - adjacent room: ISO 140-4, ASTM E336
Absorption Coefficient: ISO 354, ASTM C426
Reverberation Time: ISO 3382, ASTM E2235

### Electrical, EMC & Safety

2002/95, 2002/96 and 2003/108/EC Directive
2004/108/EC Directive
2002/96/EC WEEE (RAEE) Electronic Waste Disposal
2002/95/EC ROHS

## Ordering Information

### Standard Accessories

CCS044 Flight Case for Omni-directional Source
Technical Manual & User's Guide
Signal Cable (speak-on to speak-on), 10m

### Optional Accessories

TRP023 - Heavy Duty Loudspeaker Tripod
BAS002E/U - Lightweight Power Amplifier
BAS003 - Directional Speaker (Façade)



**LARSON DAVIS**  
A PCB PIEZOTRONICS DIV.

3425 Walden Avenue, Depew, NY 14043-2495 USA

Phone 716-926-8243

Toll-Free in USA 888-258-3222 Fax 716-926-8215

E-mail sales@larsondavis.com Web Site www.larsondavis.com

ISO 9001 CERTIFIED

© 2012 PCB Group, Inc. In the interest of constant product improvement, specifications are subject to change without notice. PCB, and ICP are registered trademarks of PCB Group Inc., SoundTrack LXT, Spark and Blaze are registered trademarks of PCB Piezotronics, Inc. HV Manager is a trademark of PCB Piezotronics, Inc. All other trademarks are properties of their respective owners.

LD-BAS001-0812

Printed in U.S.A.

For environmental noise monitoring and building acoustics, **Larson Davis** offers a full line of instruments, accessories and software. For personal noise and vibration exposure monitoring, Larson Davis complements this with sound level meters, personal noise dosimeters, human vibration meters, audiometric calibration systems and hearing conservation programs.

Visit [www.larsondavis.com](http://www.larsondavis.com) to locate  
your nearest sales office